

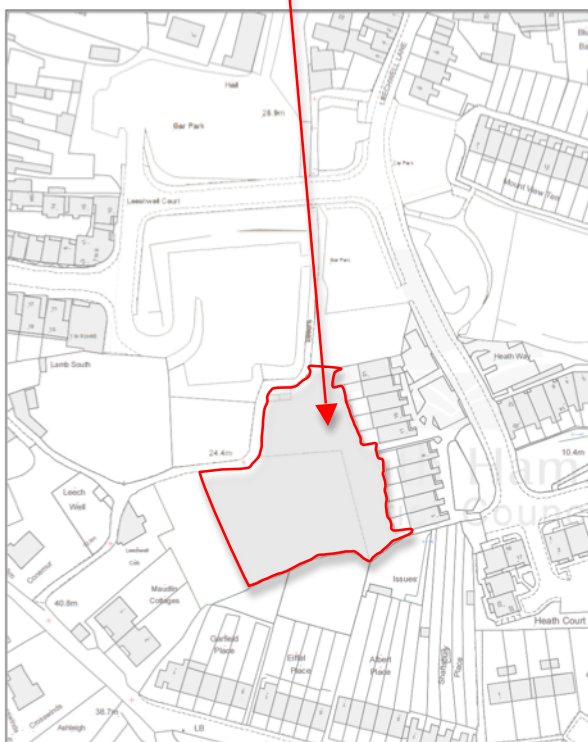
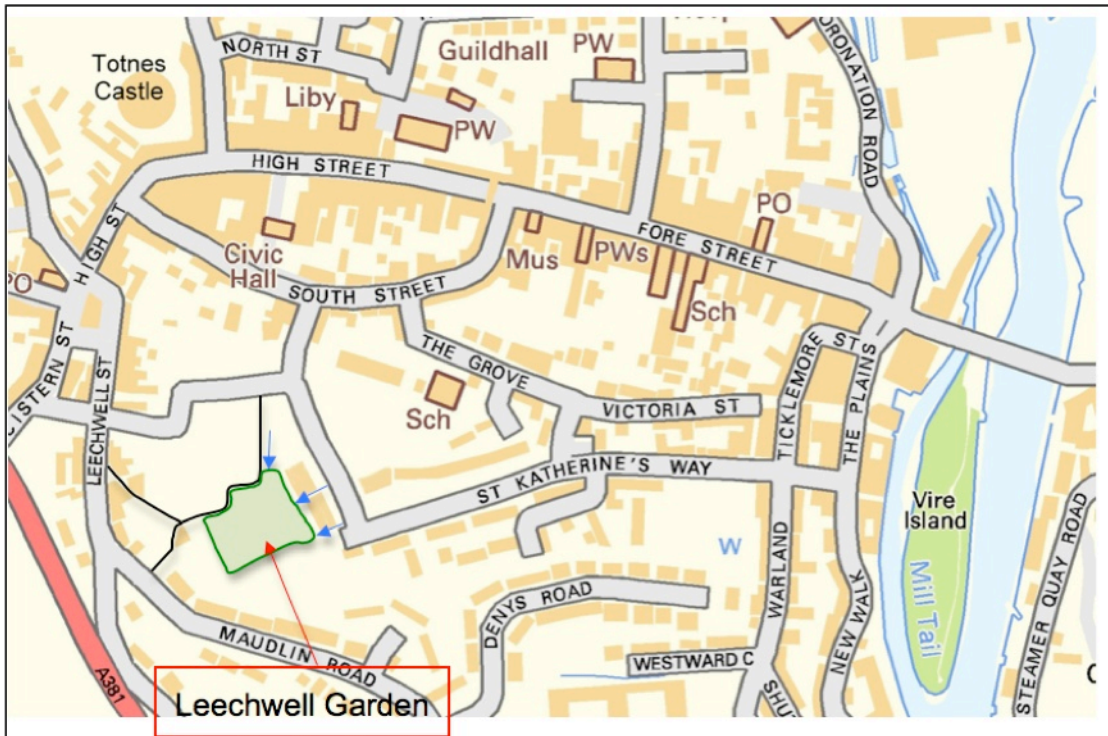
# Leechwell Garden Association

Community Spaces Grant Application (Stage 2)  
URN: JWES-7VGG56

Supporting Document No. 3  
Location and Site Plans

# Location and Site Plans of the Leechwell Garden

## Location Maps of Totnes



These maps show the location of the Garden – just off Heath Way to the south of the centre of Totnes. The garden is surrounded by the gardens of private houses on three sides and by the wall of the footpath that runs to the Leechwell on the other.

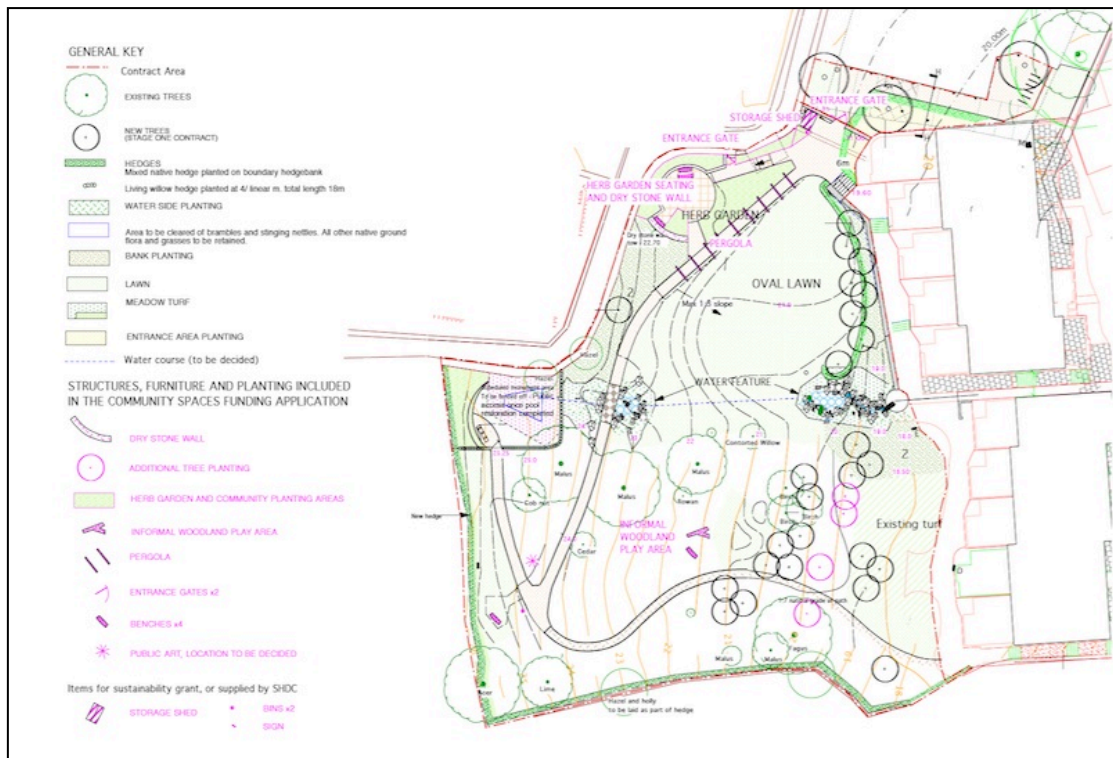
The garden measures some 53m by 60m (at its widest) and has an area of roughly 2500 sq m ( $\frac{1}{4}$  of a hectare).

# Location and Site Plans of the Leechwell Garden

## Original 2006 Design



## Current 2010 Plan



High-resolution versions of these plans are available on the LGA website at <http://leechwellgarden.org.uk/JWES-7VGG56>